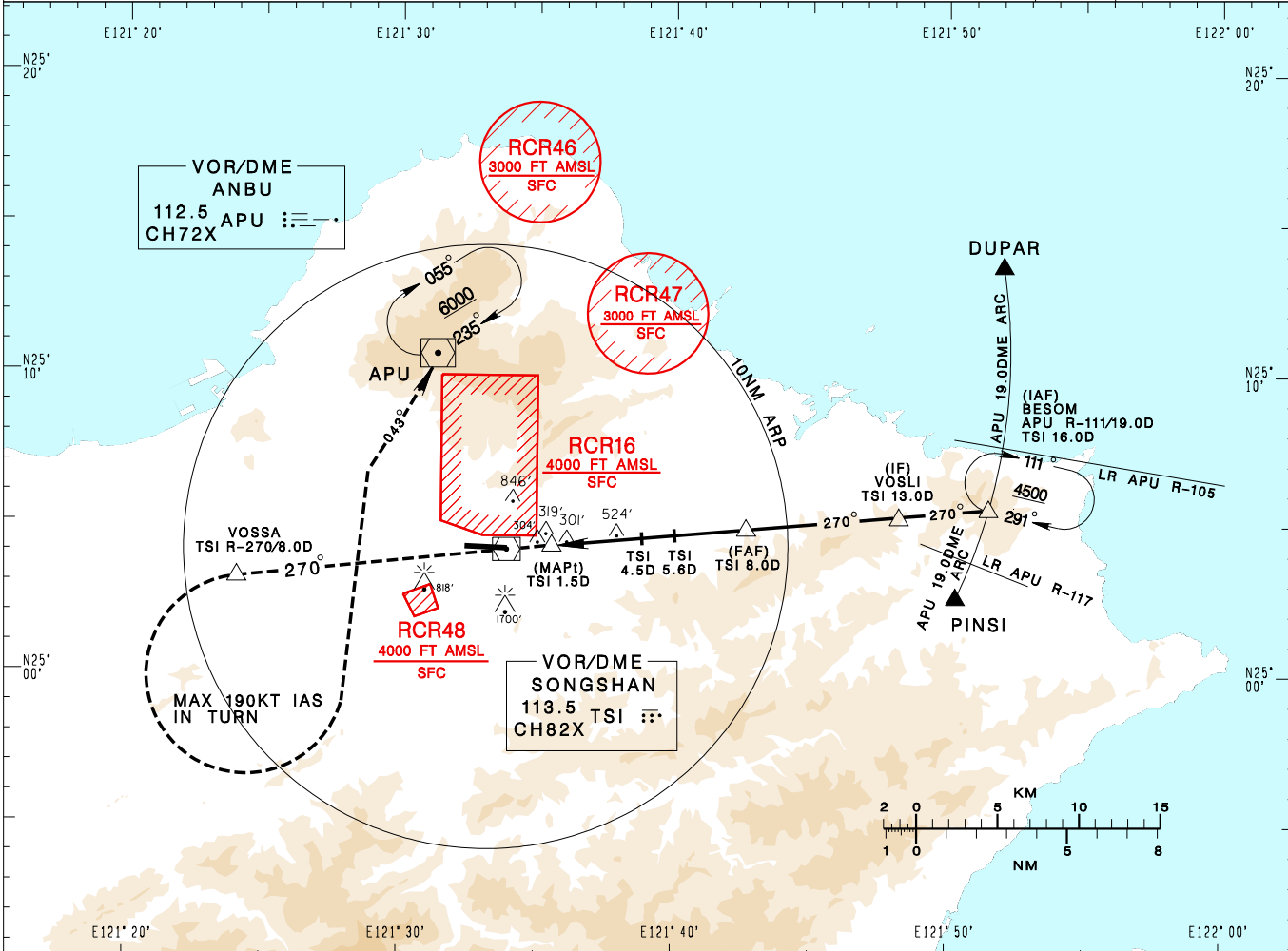


臺北/松山機場
TAIPEI/SONGSHAN AD

RCSS
VOR RWY28

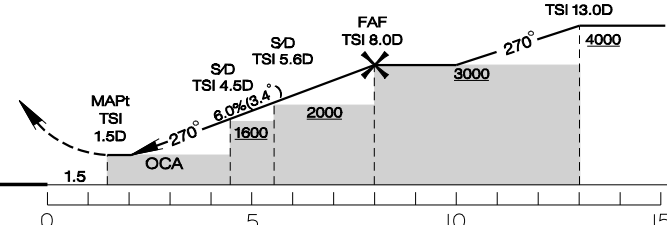
| | | | | | |
|--|-----------------------|--------------------|--------------------|-----------------------|--------------------|
| TAIPEI APP 119.7 119.6 125.1 | SONGSHAN TWR 118.1 | ATIS 127.4 341 | VAR 5° W-2022 ↑ | 9100' MSA ARP 25NM | |
| Apt Elev: 18' | Rwy28 THR Elev: 14' | Trans Level: FL130 | | | Trans Alt: 11,000' |
| BEARINGS ARE MAGNETIC; DISTANCES ARE NAUTICAL MILES; ELEVATIONS, HEIGHTS IN FEET | | | | | |



| | | | | | | | | |
|--------------|--------|--------|--------|--------|--------|--------|--------|--------|
| DIST to TSI | 3.0DME | 4.0DME | 4.5DME | 5.0DME | 5.6DME | 6.0DME | 7.0DME | 8.0DME |
| ADVISORY ALT | 1160 | 1520 | 1700 | 1890 | 2100 | 2260 | 2630 | 3000 |

MISSED APCH:
TRACK TSI R-270 TO VOSSA,
CROSS VOSSA AT OR ABOVE 3000,
THEN TURN LEFT TO TRACK APU R-223
TO APU, CLIMB TO 6000 AND HOLD.

*MISSED APCH TURN LIMITED TO
190 KT IAS.



| | | | | | |
|---|----------------|-----|---|---|---|
| MINIMA (OCA IN FT, VIS IN M, OCH IN FT) | | | | | NOTE 1.FINAL APCH COURSE CROSSES RWY CL EXTENSION AT 0.7NM FROM THR28. 2.DESCENT ANGLE FROM FAF IS 3.4°, NOT COINCIDENT WITH PAPI. 3.CIRCLING ONLY AUTHORIZED FOR CAT A HELICOPTERS. 4.A 1700ft-HIGH BUILDING AT 2.1NM SOUTH OF THR28. 5.A 818ft-HIGH BUILDING AT 2NM SW OF THR10. 6.CAUTION OBSTACLES UP TO 304FT AT 1NM EAST OF THR28 PENETRATE THE VISUAL SEGMENT SURFACE(VSS). 7.ATS SURVEILLANCE REQUIRED. *DME REQUIRED. |
| CATEGORY | A | B | C | D | |
| STRAIGHT IN | 800/3600 782 | | | | |
| CIRCLING | 1180/3600 1162 | N/A | | | |

CHANGES: RCR49 COMPLETELY WITHDRAWN